



CEDRIC DUPONT ANTIQUES

P A L M B E A C H

The largest collection of important 17th, 18th and 19th century French, Italian and Continental Antique furniture and accessories in the United States. Luxuriously showcased in a truly authentic European ambiance of a custom designed two-story 20,000 square foot gallery.

3415 South Dixie Highway, West Palm Beach, FL. 33405
Tel. 561.835.1319 Fax 561.835.1379

A spectacular and high quality French 19th century Louis XIV st. ormolu and crystal lantern. The lantern is modeled off a lantern still situated in the Palais de Versailles, which was featured in Henry Havard's 19th century

Ameublement dictionary that documents pieces in the Palace of Versailles.

The lantern is centered by a richly chased bottom acorn finial amidst fine acanthus leaves in a wonderful satin and burnished finish. The body displays a fabulous shape and symmetry with a stunning array of thick crystal panes,

most likely by Baccarat, framed within an impressive ormolu cage with pointed foliate finials. Above are three most decorative smooth cabochons flanked by rich acanthus leaves with berried laurel garlands and charming seashell cabochons. The top crown displays the royal shape of a crown with richly chased ormolu jewel like designs on a hammered background below the scrolled and Fleur de Lys movements and its original ormolu canopy.

Lantern H: 36" D: 13.5" with Canopy H: 39"





DICTIONNAIRE
DE
L'AMEUBLEMENT

ET DE
LA DÉCORATION
Depuis le XIII^e siècle jusqu'à nos jours

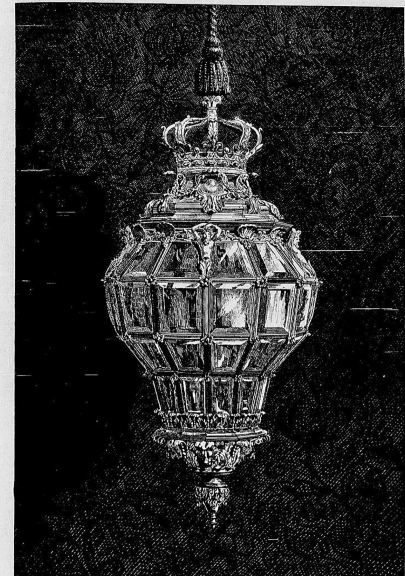


PAR
HENRY HAVARD

ŒUVRE COURONNÉE PAR L'ACADÉMIE DES BEAUX-ARTS,
ET HONORÉ DE SÉRIÉUSES
DU MINISTÈRE DE L'INSTRUCTION PUBLIQUE, DE L'ADMINISTRATION DES BEAUX-ARTS,
DU MINISTÈRE DU COMMERCE ET DE LA VILLE DE PARIS



PARIS
MAISON QUANTIN
COMPAGNIE GÉNÉRALE D'IMPRESSION ET D'ÉDITION
7, RUE SAINT-BENOÎT



K. Hagedel del.

Maison Quantin, Imp.-Ed.

LANTERNE D'ANTICHAMBRE
EN BRONZE VERNÉ ET CRISTAL TAILLÉ
(XVII^e siècle). Mobilier national.